

Field notes by Hastings...

R. J. HASTINGS

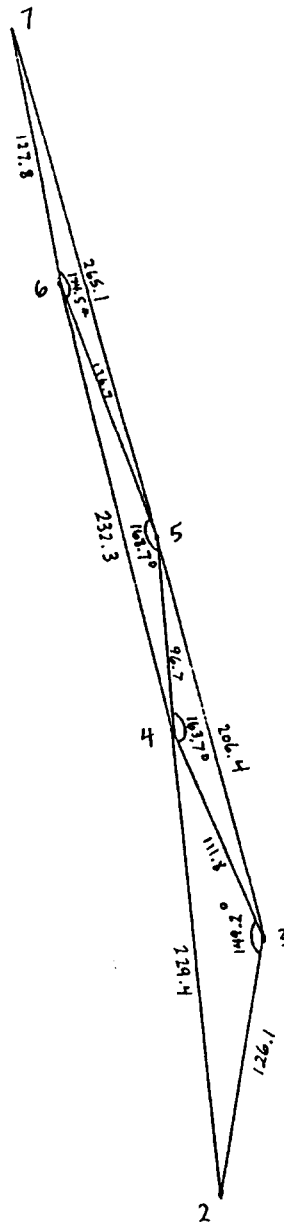
AUGUST, 1985

VELOCITY ESTIMATES

IF HIP HL =	m/sec	mi/hr
1.00m	5.75	13.1
1.25m	5.7	13.0
1.5m	6.15	14.0
1.75m	5.7	13.0

M<sup>c</sup>FALL  
F-85  
TRAIL

DIRECTION :  
288.2°  
(13.2° N of W)



NOT  
TO  
SCALE

DISTANCES IN CM