

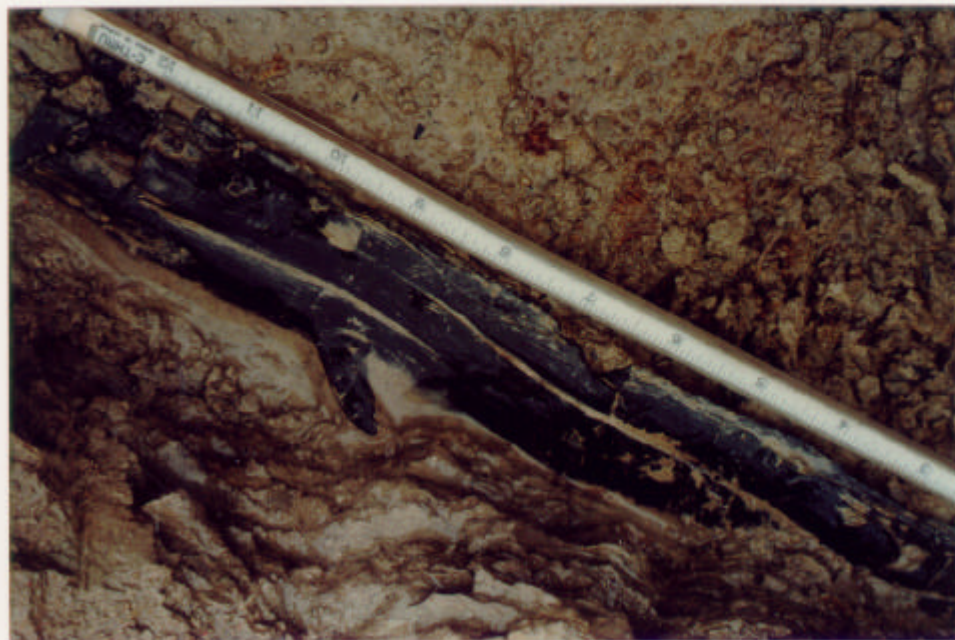


At McFall II site this researcher describes context at hand:

- (1) rapidly lithifying stone matrix,
- (2) dinosaur print with pronounced mud flow (foreground),
- (3) long *Lepidodendron* lateral root with portion depressed 8" into lower stone surface,
- (4) upper portion of root extending through clay and into upper stone layer,
- (5) tooth and Clark trail of footprints beginning in foreground.

Rapid burial and cyclical action required to explain physical context.

(Photo by Jim Freeman)



*Lepidodendron* root section showing well defined parts.